

# ***Jaw crusher***

---



- Optimum kinematics for hardest applications
- Long crushing chamber
- Very strong - oversize bearings
- High wear-resistant toggle-plate bearings and seats
- Low operating and maintenance costs

***Innovative Design, Technology and Service***

***Equipment for quarry and recycling of building material***

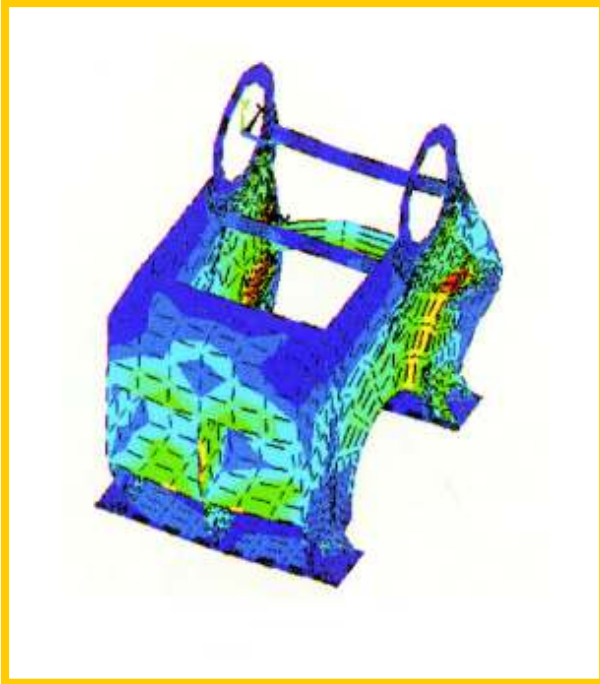
***Apollo Maschinenbau GmbH***

**APOLLO**

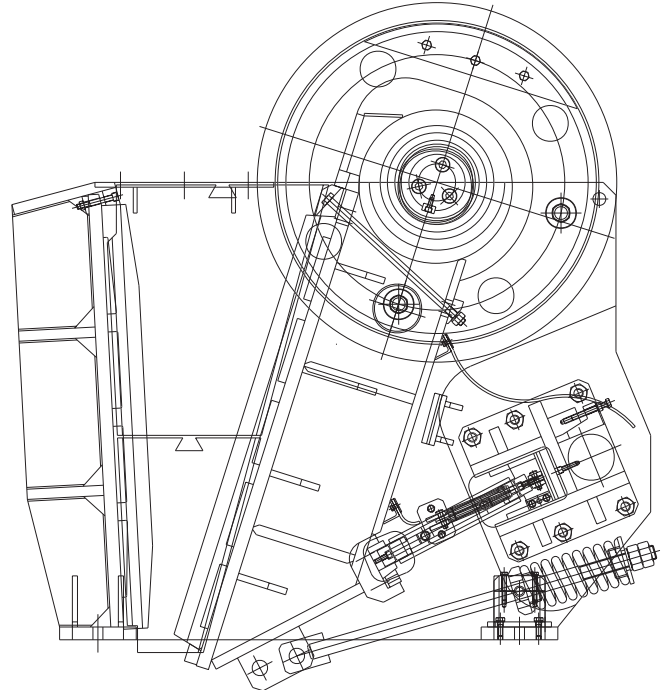
Machines and plants for  
Crushing - screening -conveyance

# Jaw crusher

The exceptionally long jaws produce a high crushing effect. The jaw crusher is marked by its outstanding strong swing jaw and a weight-optimized design. This was achieved due to a newly developed bearing in connection with smooth side walls and the use of most modern FEM calculation methods. The new pressure-plate bearing runs absolutely maintenance-free and nearly wear-free thanks to the use of highly solid polymer-fixed roll leadges instead of conventional pressure pans.



FEM calculation analysis



Jaw crusher 1050 x 700

type	setting mm	capacity m <sup>3</sup> /h	clear feed opening mm	crusher revolution rpm	required power kW	weight t
BB 400 x 250	20 – 60	3 – 13	400 x 250	275	11 – 18,5	2,8
BB 600 x 400	40 – 100	10 – 34	600 x 400	275	22 - 37	6,5
BB 850 x 550	30 – 120	30 - 60	850 x 550	300	30 – 45	8,5
BB 1050 x 700	40 – 160	50 – 180	1050 x 700	265	45 - 75	18
BB 1250 x 900	40 - 210	70 - 235	1250 x 900	220	90 - 110	27

All details are average figures. They depend on the feeding material, material size, setting etc and are not binding. We recommend to discuss each crushing matter with us. Dimensions and designs are subject to alterations.